

**Scolioneura vicina (Konow, 1894)
(Hymenoptera: Tenthredinidae) - a first
record for mainland Britain:**

On 10th May 2008 Rob Edmunds found an leaf mine on Silver Birch (*Betula pendula*) which he thought was *Scolioneura vicina*.

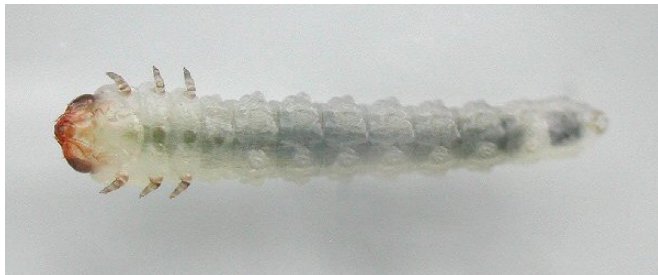
This is an early season sawfly leaf miner which makes blotch mines on the edges of the leaves. The mine is shown opposite (note the larva in the mine).



Photos © Rob Edmunds

The larva, when examined, was 6mm long and had the characteristics of *S.vicina* being long-legged and with pale brown sclerotizations. This helps distinguish it from the closely related miner of Silver Birch - *Scolioneura betuleti*.

The latter also occurs later in the season:



Ventral view



Dorsal view

The identification by RE was confirmed by Ewald Altenhofer who said that the phenology is also right. The larvae leave their mines from mid June - beginning second half of June.

This specimen represents, as far as we are aware, the first record of this leaf miner in mainland Britain and the first record of the leaf mines in Britain.

Scolioneura vicina was added to the British list on the basis of a female specimen found in a collection in Ireland from May 1942 (Liston & O'Connor, 2005).